

transport

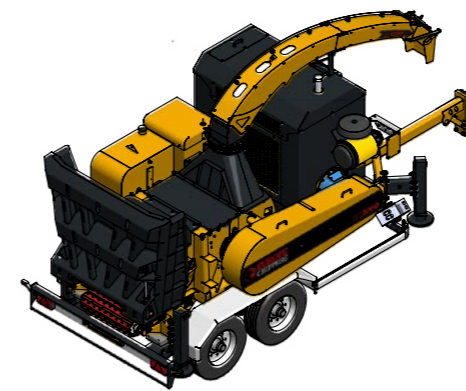
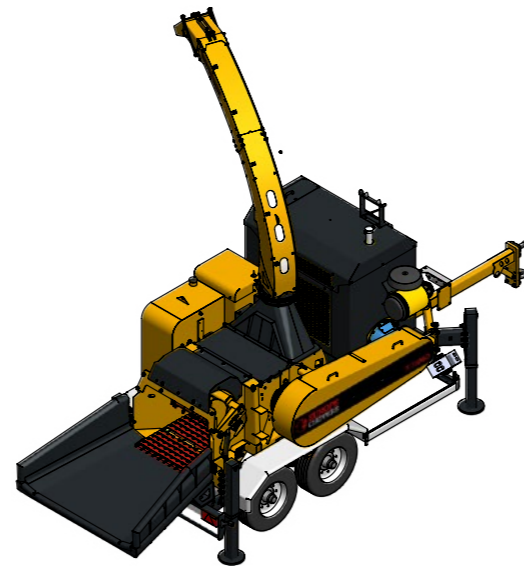
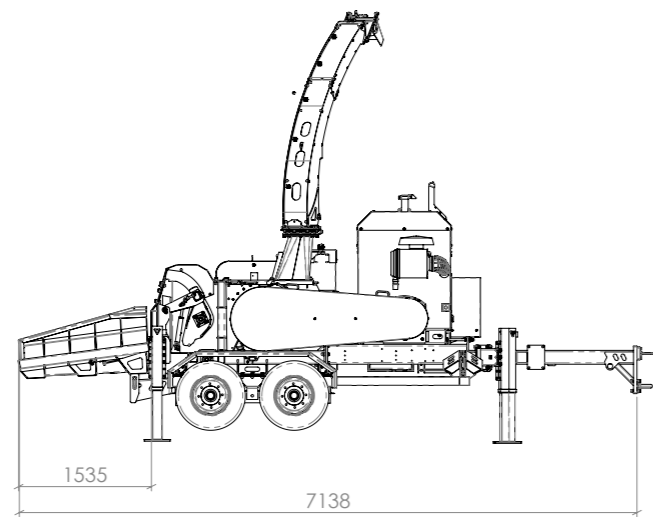
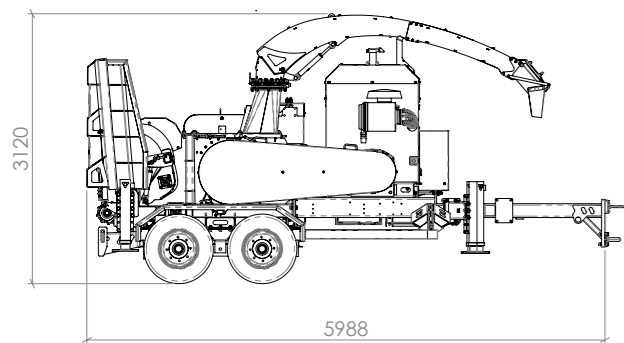
EC 850 TANDEM

work

work

EC 850 TANDEM

transport



transport

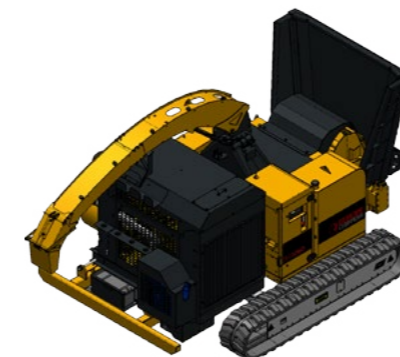
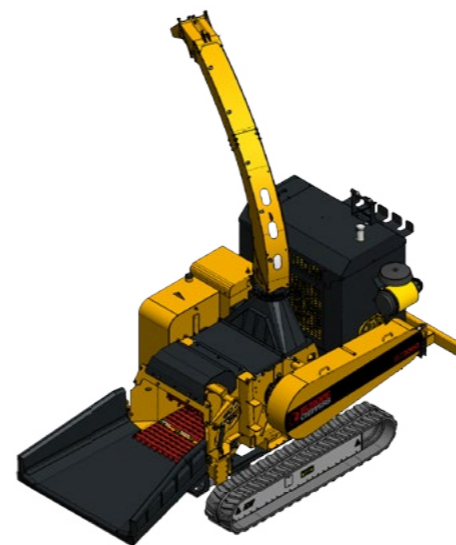
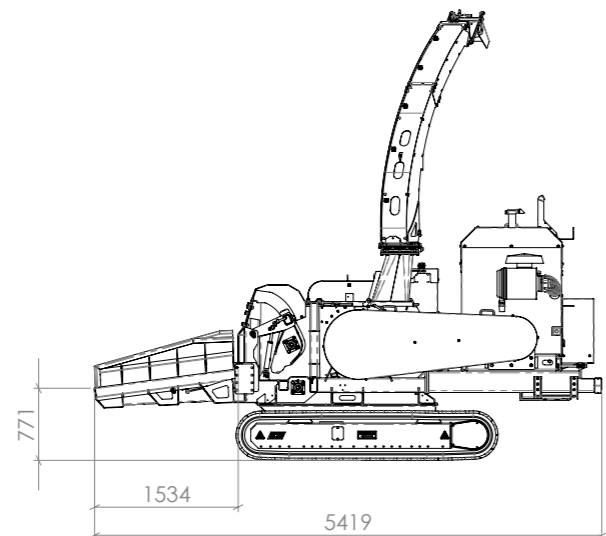
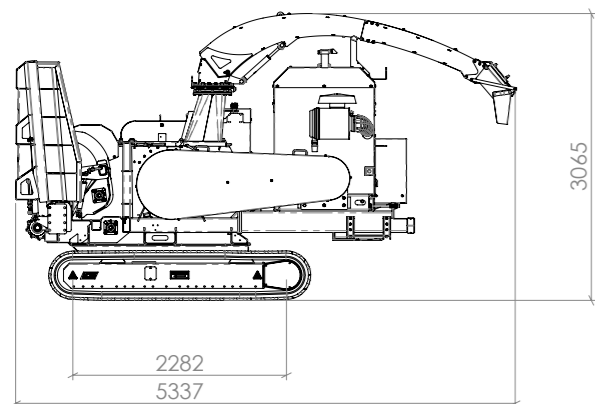
EC 850 TRACKS

work

work

EC 850 TRACKS

transport



+31 529 46 12 66
 info@europeforestry.com
 europeforestry.com

Subject to misprints, errors and modifications.

up to 100 m³/h

up to 275 hp

logs up to 500 mm



EC850 trailer with optional crane, transport mode



Optional remote control with joysticks



Europe controller with vario chip and constant chip



Optional long infeed table

EC850

The EC850 is perfect for industrial work. It can do 100 m³/h and the size of the wood chips can be easily changed. It is compact enough to be taken anywhere, be it into the woods or next to a highway.

1 The EC850 is equipped with a top infeed roller and reduction gear. With steel infeed plate, a 275 hp Caterpillar engine, with hydraulic or manual clutch, alcoa rims and Europe Controller including no stress.

2 The EC850 is has a Venturi system. The Venturi system blows additional air in the funnel behind the drum for smooth discharge of chips through the chute. As this system does not use energy consuming paddles, more engine power is available for chipping wood and the wood chips are not damaged. Another benefit is that there will be little to no dust and debris when chipping. A more uniform chip size is then created. This energy-efficient system ensures a more enjoyable chipping experience.



3 If you prefer to chip wood stationary you can also choose to go with an electro motor instead of a diesel motor. The EC850 will then make use of the (strong) power supply or a generator. The specifications and the output of the machine will remain the same. Driven by electric power a vast reduction of energy consumption is achieved.

4 A longer infeed table can be added to your EC850. Having a longer infeed table makes feeding wood to the drum a whole lot easier. This option is ideal when you are working with voluminous material, such as branches and pruning waste, and with long, dense trees, such as populus. Once the chains get a hold of the material they will not let go.

5 We can mount a Palms 4.71 or 5.85 crane that can be operated with a radio remote control or with joysticks.

6 We can give you German TUV to make your EC850 road legal on any road.

7 Other options are a self adjusting hydraulic clutch, aggressive bottom infeed chain and reduction gears, tracks, hooklift, tandem chassis, hydraulic infeed chains and a foldable table, a 140 liter load sensing piston pump instead of a 70 liter gear pump and a Flexxaire self cleaning ventilator and radiator.

Power	275 hp Caterpillar C7.1 engine
Output	Up to 100m ³ /h
Infeed opening	800 x 500 mm / 32" x 21"
Drum diameter	800 mm, including knives
Upper feed wheel	350 x 800 mm (diameter x width) + reduction gear
Bottom infeed chain	800 mm (width) + reduction gear
Drum rotation speed	800-1000 rpm
Knives	3 staggered knives and 1 counter knife
Weight	7.900 kg (chipper + engine + tandem chassis)
Specifications	Europe controller w/ PLC, colour display. Long pipe of 4 m w/ Venturi configuration. Automatic no-stress system. Emergency stop on both sides, manufactured from high grade steel S335 and Strenx 700 steel.
General options	Proportional valves. Remote control. Two special colours of your choice possible. Knife. Counter knife. Screen 70/90/110 mm of Hardox steel. Oil cooler electric.
Power options	275 hp CAT C7.1 stage 5. PTO shaft plus pulleys and drive train up to 300 hp. Electrical motor up to 250 kW. Hydraulic clutch.
Transport options	Tandem axle with air brakes plus draw bar, spring suspension up to 40 km/h road legal or air brakes up to 80 km/h road legal. Optional draw bar eye 50 mm instead of 38 mm. Truck mount frame. Hook lift frame. Extra hook in the rear. 2-speed steel tracks. Rubber pads. Radio remote control for tracks.
Crane options	Palms crane up to 5 tonnes and 8,5 m reach. Electrical controllers plus 6 pcs Danfoss PVG32 plus load sensing pump. Crane mounting plate plus adjustment to chassis. Closed grapple or energy grapple. Cabin optional. Double legs in front and rear. Optional control arm.